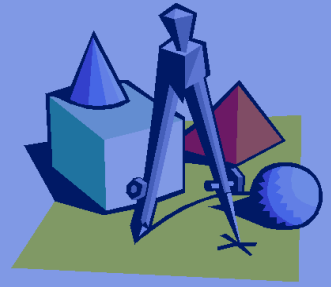


MATH 3342 - 3343

Expanded Mathematics Through Applications

Course - Information



Push the Pride: Be Responsible, Be Respectable, Be Positive!

Mr. Chilcutt, Mr. Falinski, Mr. Lindahl, Ms. Nomani, & Mr. Sanabria

Available Office Hours

Ronald.Chilcutt@d300.org	(224) 484-5146	3 rd , 6 th , 7 th , & 9 th – Room 110
Sebastian.Falinski@D300.org	(224) 484-5154	2 nd , 6 th , & 9 th Periods – Room 110
Daniel.Lindahl@D300.org	(224) 484-5254	Appointment Only – Room 213F
Aruba.Nomani@D300.org	(224) 484-5159	4 th , 5 th , & 9 th Periods – Room 110
Justin.Sanabria@D300.org	(224) 484-5153	2 nd , 4 th , & 7 th Periods – Room 110

After school by appointment.

Objective

The focus of this course is to strengthen and improve fundamental skills that will make students successful in college utilizing a project-based learning approach. The use of modeling, problem-solving, and critical thinking skills throughout this course will enable students to make connections, increase mathematical fluency and increase the likelihood of placing into a transfer level college mathematical course.

Why did we create this class?

- This class is aligned to the Common Core Mathematics Standards and designed by both college and high school teachers of mathematics to provide a bridge between high school and entry level college mathematics courses for students who typically struggle with this transition.
- This course provides an opportunity for students who have passed Algebra II, but are not ready to enter Pre-Calculus to take a mathematics course their fourth year. This course helps students develop college study skills while engaging them in applications associated with mathematics so they may be college ready in mathematics.

Course Materials

- Basic school supplies
- Binder recommended
- Graphing calculator (TI 83/84 Plus preferred)

Class Expectations

- Respect is the number one rule in the classroom. This includes, but is not limited to, respecting the teacher, other students, and school property.
- Attendance is crucial to your success in the classroom. You should do your best to attend each class and arrive on time. The student is responsible for any missed material and/or assignments.
- Technology, including but not limited to netbooks and mobile devices, must be used for educational purposes only. If the student is found misusing these devices, the device will be confiscated and consequences will be enforced.
- Academic dishonesty will not be tolerated. Consequences will follow the DCHS Student Handbook.

Homework

- Homework will be assigned and should be completed on a regular basis. The purpose of homework is for practicing and reinforcing the concepts learned in class. It is essential that students practice the material as mathematics is a cumulative subject. We continuously build upon what we have learned, and the most successful students achieve mastery on a topic through practice, reflecting on feedback, making corrections, and frequently asking questions.
- Homework will count for 5% of your grade. Homework will be collected in chronological order before every assessment. This will allow the students adequate time to attempt, ask questions, seek help, and complete all assignments prior to taking the assessment.

Assessments

- Formative and summative assessments will be given during each unit. These assessments will be based on the course learning targets and will allow students to demonstrate their mastery of these targets. Formative assessments (Quizzes, Exit Slips, Etc.) will be used to provide written feedback on student's performance on the material and appropriate amount of time will be given to correct mistakes in preparation for the summative (Tests) assessment.
- Students will have the opportunity to show more learning by retaking any formative assessment given if they have satisfied the following requirements on their own time:
 - An appointment must be made to revisit the material, not during class time.
 - Homework must be completed and shown to the teacher prior to retaking the assessment.
 - Corrections to their formative assessments must be completed.
 - Students have **two weeks** to complete a retake once the original assessment is distributed back to the student. (Students may only retake an assessment one time)

Grading

- Your grade will be determined by your achievement on the assessments.

Homework – 5%

Homework will be collected before every assessment (At Teachers discretion). The main purpose of homework is for students to receive the necessary practice to ensure success on assessments.

Assessments – 75%

Quizzes (25%) will be used to provide descriptive feedback on skills leading up to learning targets and understanding of materials. Quizzes are allowed to be retaken after the aforementioned requirements are met. Unit Assessments (50%) will be used to check for mastery of learning targets at the end of each unit.

Final Exam – 20%

Final which is 20% of the overall grade.

- The grading scale is as follows:

A = 100% - 90% B = 89% - 80% C = 79% - 70% D = 69% - 60% F = 59% & under

- My goal is that a student's grade truly reflects his or her understanding of the main concepts and the ability to successfully complete required calculations instead of a tabulation of points earned on given assignments.

Extra Help

- It has been said that it is easier to keep up than to catch up. With that in mind, should a student experience any difficulty in class, I strongly encourage him/her to see a tutor. Please make an appointment as soon as you realize you need help.
- Before or after school help with your teacher is available in room 110, the mathematics office, by appointment. Please e-mail or see me during class to schedule your meeting. (If you use email, be sure to fill in the subject field, or your email will be caught in the spam filter.)

Additional Information

Parents/Guardians:

I welcome the opportunity to discuss your son/daughter's progress in my class. Please do not hesitate to contact me. I look forward to working together on a successful year.

The course syllabus reflects goals and objectives of Expanded Mathematics through Application. Please read the syllabus along with the classroom expectations with your child and complete the information below. Thank you.

MATH 3342 - 3343: Expanded Mathematics through Application

I have read and understand the expectations as presented in the MATH 3342 - 3343:

Student's name (print) _____

Student's signature _____

Parent's name (print) _____

Parent's signature _____

Best phone number to reach a parent _____

Second best phone number to reach a parent _____

Best email to reach a parent _____

Which form of communication is best to reach a parent?

Telephone

Email

Please state or list any concerns or requests for class.

-
-
-
-